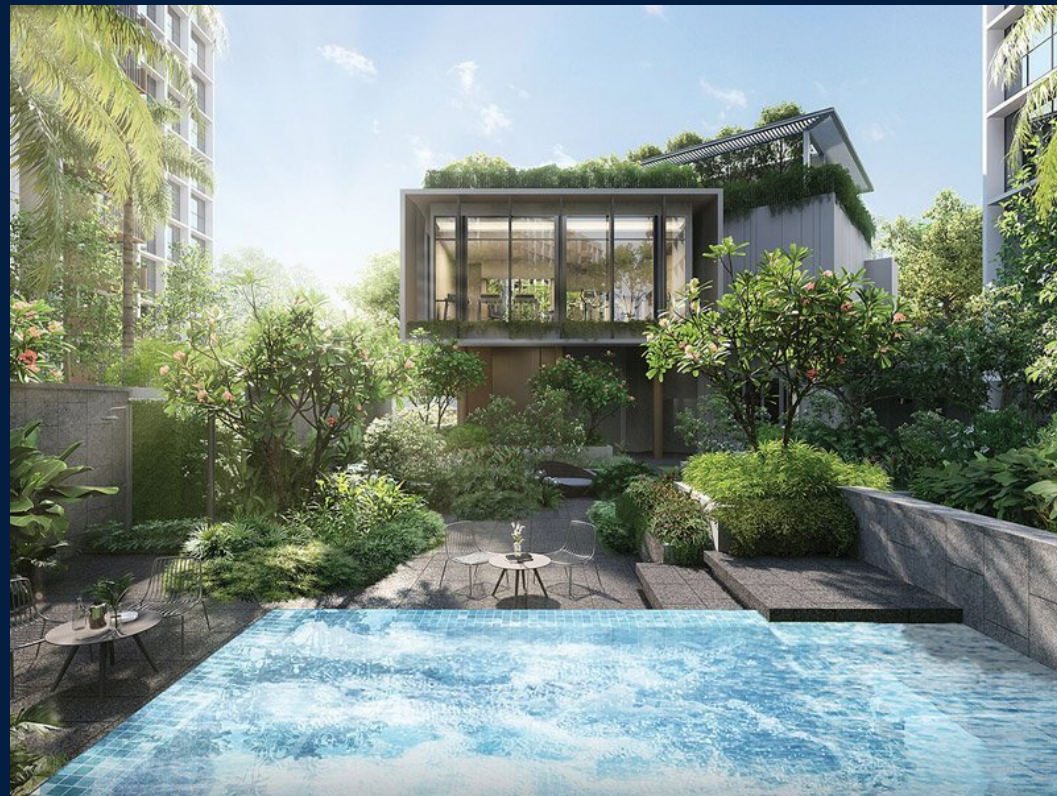


FOR SALE

RESIDENTIAL - EXECUTIVE CONDO 1,206SQFT (112SQM) / CALL FOR PRICE!

+65 9009 1649



4 - Bedroom Premium

TYPE D1-P

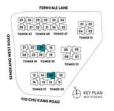
112 sqm | 1,000 sqft
Tower 35 #01-09
Tower 39 #01-17

TYPE D1

112 sqm | 1,000 sqft
Tower 35 #02-09 to #13-09
Tower 39 #02-17 to #13-17

TYPE D1-PH

131 sqm | 1,410 sqft
(inclusive of 15 sqm strata
void cover/terrace)
Tower 35 #14-09
Tower 39 #14-17



RESIDENTIAL - EXECUTIVE CONDO

31, 33, 35, 37, 39, 41, 43, 45, 47 FERNVALE LANE,
SELETAR, YIO CHU KANG, SINGAPORE 797504

- LISTING ID: SGLD79546614
- TENURE: LEASEHOLD 99
- TITLE: N/A
- SIZE BUILT-UP: 1,206SQFT (112SQM)
- SIZE LAND: 4.233AC (1.713HA)
- NO. OF FLOORS: 14
- FLOOR/LEVEL: N/A - N/A
- BED ROOMS: 4
- BATH ROOMS: 3
- MAIDS ROOMS: N/A
- PARKING SPACES: N/A
- LAYOUT TYPE: OTHER
- FACING: N/A
- VIEWING: OTHER
- SELLING PRICE: **CALL FOR PRICE!**
- COMPLETION YEAR: 2026
- CONDITION: ORIGINAL CONDITION
- FURNISHING: PARTIALLY FURNISHED
- LISTING DATE: SEP 20, 2021

PARC GREENWICH

Executive Condo for Sale: Partially furnished, 4 bedroom, 3 bathroom. Completed in 2026, this unit is in original condition. Tenure: Leasehold 99 Located in Singapore's district D28 near Seletar, Yio Chu K in the area North East (North East region).

INTERIOR FACILITIES

- Air-Conditioning
- Balcony
- Bombshelter

OTHER INTERIOR FEATURES

- Cooker Hob/Hood
- Intercom
- Oven / Microwave
- Water Heater

EXTERIOR FACILITIES

- 24 Hours Security
- Billiards Room
- Clubhouse
- Covered Car Park

VISIT THIS PROPERTY AT: <https://agents.huttonsgroup.com/R008015F/property/SGLD79546614>



JC WANG - HUTTONS ASIA PTE LTD

3 Bishan Place #05-01 CPF Bishan Building
D20, 579838, Singapore

+65 9009 1649
WhatsApp Me

w.junchao@yahoo.com

L3008899K
R008015F

<https://agents.huttonsgroup.com/R008015F>



Scan QR Code