

# FOR SALE

## RESIDENTIAL - CONDOMINIUM 829SQFT (77SQM) / CALL FOR PRICE!

+65 9296 8795

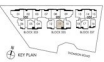
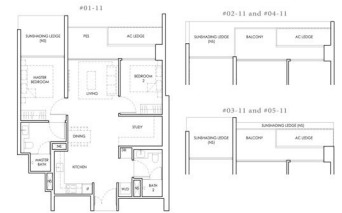


2 - Bedroom + Study

**TYPE B4-2**  
77 SQM | 829 SQFT

**TYPE B4-2P**  
77 SQM | 829 SQFT

#01-11



### RESIDENTIAL - CONDOMINIUM

333 - 337 THOMSON ROAD, NEWTON, NOVENA,  
SINGAPORE 307675

- LISTING ID: SGLD39741776
- TENURE: FREEHOLD
- TITLE: N/A
- SIZE BUILT-UP: 829SQFT (77SQM)
- SIZE LAND: 1.317AC (0.533HA)
- NO. OF FLOORS: 5
- FLOOR/LEVEL: N/A - N/A
- BED ROOMS: 2+1
- BATH ROOMS: 2
- MAIDS ROOMS: N/A
- PARKING SPACES: N/A
- LAYOUT TYPE: OTHER
- FACING: N/A
- VIEWING: OTHER
- SELLING PRICE: **CALL FOR PRICE!**
- COMPLETION YEAR: 2025
- CONDITION: ORIGINAL CONDITION
- FURNISHING: PARTIALLY FURNISHED
- LISTING DATE: MAY 06, 2021

### PEAK RESIDENCE

Condominium for Sale: Partially furnished, 2 bedroom, 2 bathroom. Completed in 2025, this unit is in original condition. Tenure: Freehold Located in Singapore's district D11 near Newton, Novena in the area Newton (Central region).

#### INTERIOR FACILITIES

- Air-Conditioning
- Balcony

#### OTHER INTERIOR FEATURES

- Cooker Hob/Hood
- Dryer
- Fridge
- Intercom

#### EXTERIOR FACILITIES

- 24 Hours Security
- Clubhouse
- Covered Car Park
- Jacuzzi

VISIT THIS PROPERTY AT: <https://agents.huttonsgroup.com/R042661C/property/SGLD39741776>



### SABRINA RUSKIN - HUTTONS ASIA PTE LTD

3 Bishan Place #05-01 CPF Bishan Building  
D20, 579838, Singapore

+65 9296 8795  
WhatsApp Me

rinar7201@gmail.com

L3008899K  
R042661C

<https://agents.huttonsgroup.com/R042661C>



Scan QR Code